

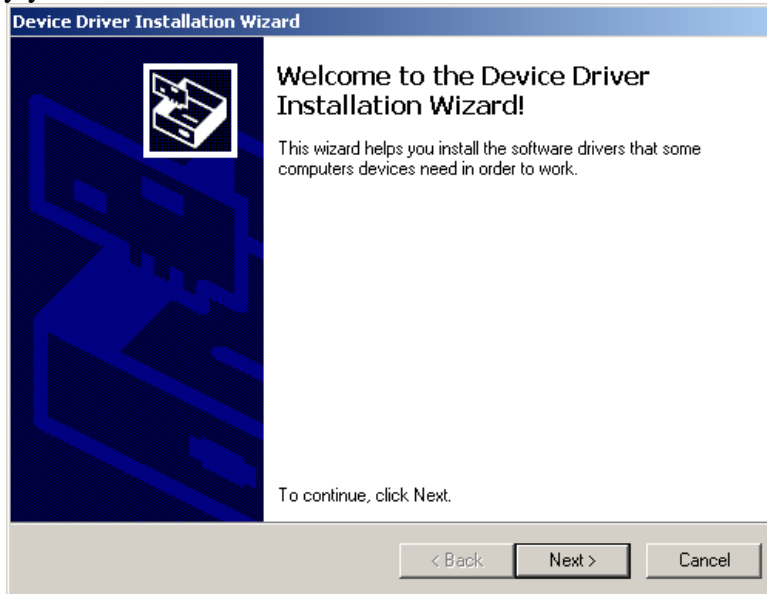
Before you get started, be sure that;

- You are running either Windows™ XP or 2000, or 32-bit Windows Vista™. 64-bit Windows Vista™ is currently unsupported. Non-Windows systems typically don't require device drivers, so this guide and driver are not needed.
- The driver package for the device you wish to install

How the program works

The executable automatically finds device drivers within the folder which it is contained and preinstalls them so when you plug the device in, Windows will find the device driver and automatically install it for you.

1. Double-Click “DPinst.exe” to initiate device driver installation.
2. Click next to verify you wish to install the drivers in this folder



3. When the driver has been installed, click finish and plug in your device
4. Sometimes an extra step is required to finalize installation, this will occur if you see the following screen upon plugging in your device:



If this screen appears, just click next in order to finish installing your device