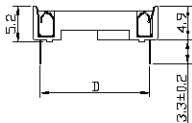
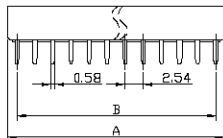
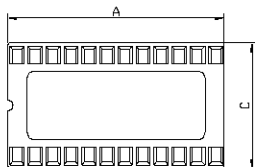


6000 Series



LTR.	REV.	RECORD	DATE
A			
B			
C			

MATERIAL :

INSULATOR : PBT + THERMOPLASTIC,30% Glass
 FILLED,UL 94V-0 RATED
 CONTACT MATERIAL : PHOSPHOR BRONZE

ELECTRICAL CHARACTERISTICS:

CONTACT CURRENT RATING : 1AMP
 DIELECTRIC WITHSTANDING VOLTAGE: 750V AC MIN.
 CONTACT RESISTANCE : 30 MILLIOHMS MAX.
 INSULATION RESISTANCE : 1000 MEGOHMS MIN.
 TEMPERATURE RATING : -55°C--+105°C

A176064	64	B1.2B	78.74	25.93	22.86
A176048	48	60.96	58.42	17.6	15.24
A176042	42	53.34	50.8		
A176040	40	50.8	48.26		
A176032	32	40.64	38.1		
A176028	28	35.56	33.02		
A176024	24	30.48	27.94	12.7	10.16
A174024	24	30.48	27.94		
A174022	22	27.94	25.4		
A173032	32	40.64	38.1		
A173028	28	35.56	33.02		
A173024	24	30.48	27.94	9.96	7.62
A173022	22	27.94	25.4		
A173020	20	25.4	22.86		
A173018	18	22.86	20.32		
A173016	16	20.32	17.78		
A173014	14	17.78	15.24	6	5.08
A173008	8	10.16	7.62		
A173006	6	7.62	5.08		
PART NO	PINS NO. OF	A	B	C	D

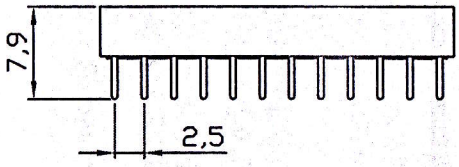
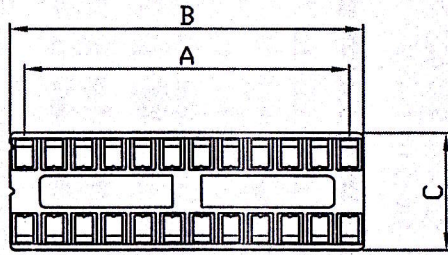
Top Willing Co., Ltd.			DESCRIPTION	IC SOCKET SERIES	
DWG. NO.			A170000		
AUTHORITY	SIGNATURE	DATE		TOLERANCE UNLESS OTHERWISE SPECIFIED	
DWN.	JAY	2008.11.03		LINEAR	.x±0.3 .xx±0.2 .xxx±0.1
CHK.	ALEX	2008.11.03	UNIT: mm	ANGLES	
APVD.	JACKY	2008.11.03	±3°		
DWG KIND:	CUSTOMER	REV.	A 0	SCALE	1d
					SHEET 1 OF 1

S110

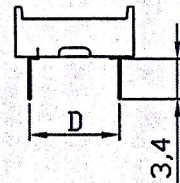
3RD ANGLE PROJECTION

METRIC

6000 Series



STAMPED TYPE



		PITCH=7.62 mm									
		6P	8P	14P	16P	18P	20P	22P	24P	28P	32P
A		5.08	7.62	15.24	17.78	20.32	22.86	25.40	27.94	33.02	38.10
B		7.52	10.06	17.68	20.05	22.76	25.26	27.80	30.30	25.48	40.58
C		9.94									
D		7.62									

		PITCH=15.20 mm							
		24P	28P	32P	36P	38P	40P	42P	48P
A		27.94	33.02	38.10	43.18	45.72	48.26	50.80	58.42
B		30.38	35.46	40.58	45.55	50.70	50.70	53.27	60.96
C		17.60							
D		15.20							

THIS INFORMATION IS CONFIDENTIAL AND IS DISCLOSED TO YOU ON THE CONDITION THAT YOU WILL NOT REPRODUCE OR DISSEMINATE IT WITHOUT THE WRITTEN PERMISSION FROM TOP WILLING CO., LTD. DIMENSIONS IN MILLIMETERS. DO NOT SCALE PRINT.

TOLERANCES UNLESS OTHERWISE SPECIFIED: 0 PLC ± 1 PLC ±0.3 2 PLC ±0.2 3 PLC ± ANGLES ±3°	DWN kathleen Liang 15-JUN-2005	Top Willing Co., Ltd. Customer Protection and Product Quality
MATERIAL SEE NOTE	APR vincent Chiu 15-JUN-2005 Jackie Wang 15-JUN-2005	NAME S110 I.C.Socket (Pitch:2.54 mm)
FINISH SEE NOTE	QUALIFICATION TEST REPORT -- WEIGHT --	LOC DW SIZE A3 DRAWING NO -- SCALE -- SHEET --