
Section 4 Pre-Lab

Section 4 Preparation

Complete the following and submit to your TA upon entering the lab. You will not be allowed to begin the lab until you have submitted the prelab.

1. Solve for V_o in Figure 1, keeping sensor as a variable resistance.

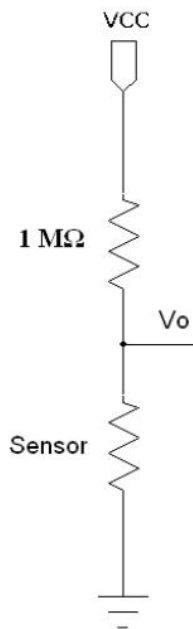


Figure 1: This is the voltage divider for the Lab 4 Prelab.

2. What would be the effect of switching the fixed and variable resistor in the voltage divider?
3. If the variable sensor has a range of 10Ω to 100Ω what is the best fixed resistor to be pair with the sensor in a voltage divider? Explain how the resistor value is justified.